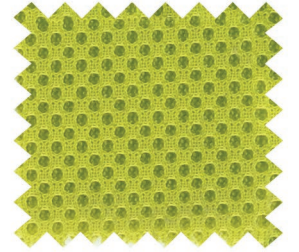
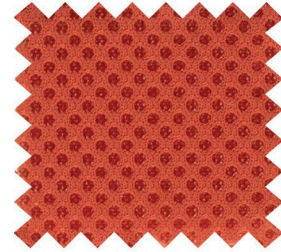
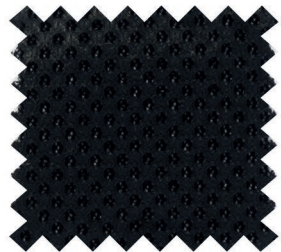


FANTONI COVERINGS COLLECTION

DIGITAL VERSION

fantoni

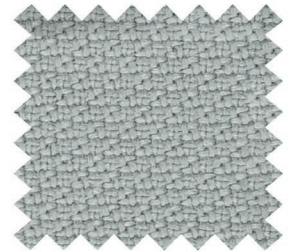
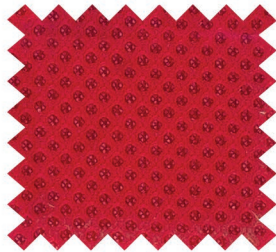
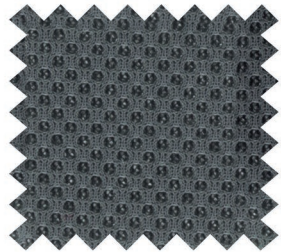
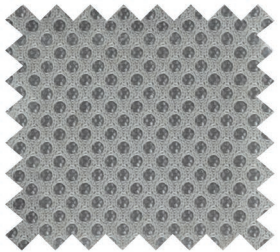


1002

1183

1A01

1A34

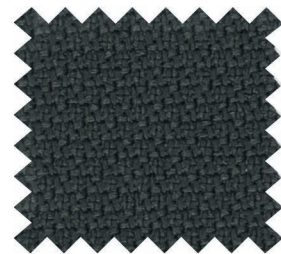
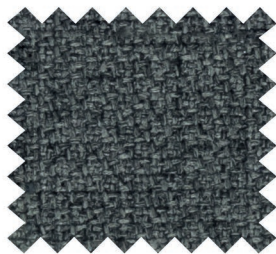
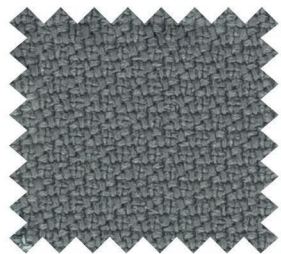


1A53

1A91

1R01

AS01



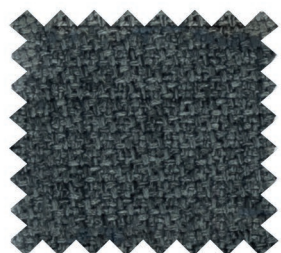
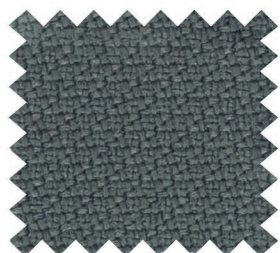
AS02

AS03

AS04

AS05

AS06



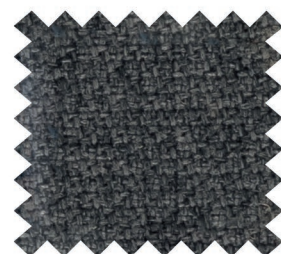
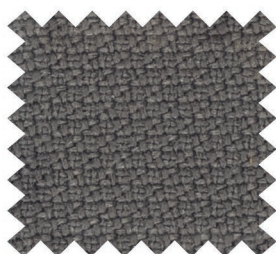
AS07

AS08

AS09

AS10

AS11



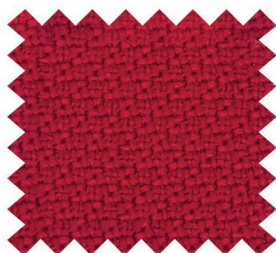
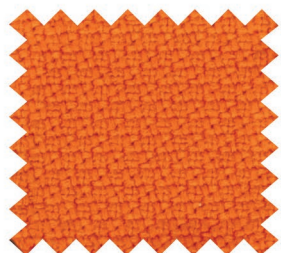
AS12

AS13

AS14

AS15

AS16



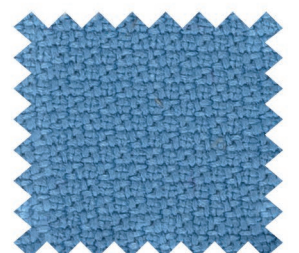
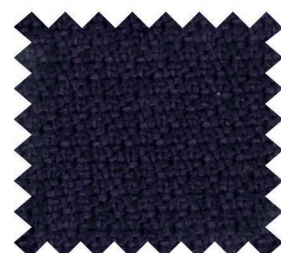
AS17

AS18

AS19

AS20

AS21



AS22

AS23

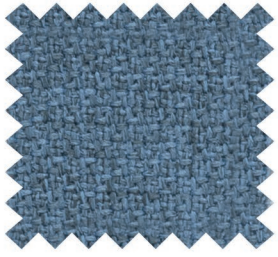
AS24

AS25

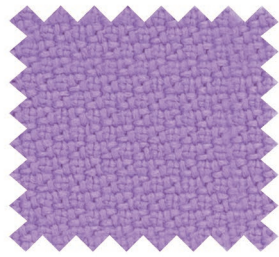
AS26

Fantoni

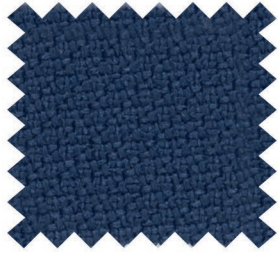
Coverings collection



AS27



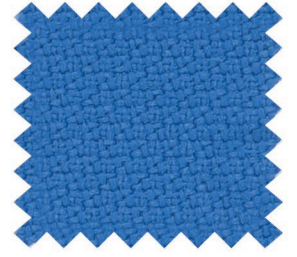
AS28



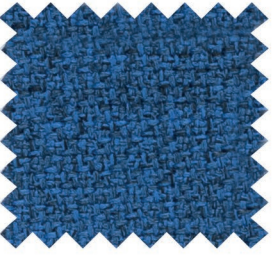
AS29



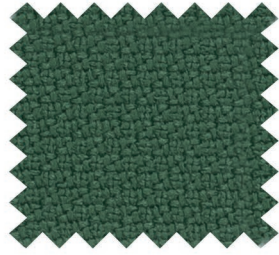
AS30



AS31



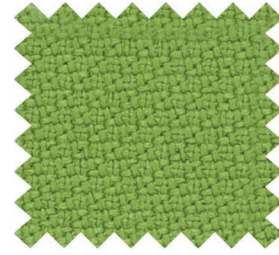
AS32



AS33



AS34



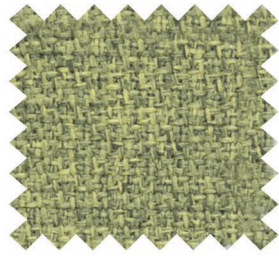
AS35



AS36



AS37



AS38



C



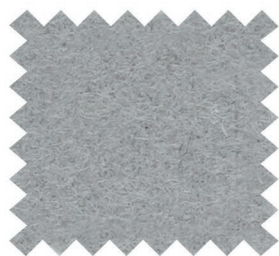
C600



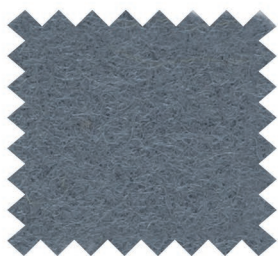
C601



C602



C603



C604



C606



C607



C608



C609



C610



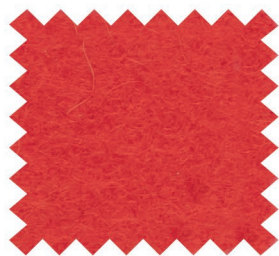
C611



C612



C613



C614



C615



C616



C617



C620



C621



C622



C623



C624

Fantoni

Coverings collection



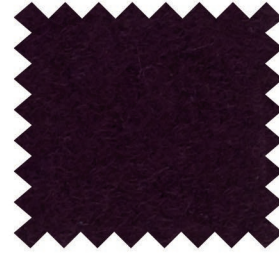
C625



C626



C627



C628



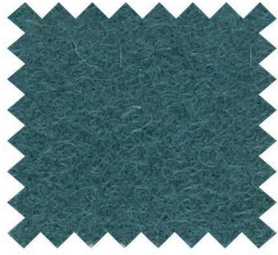
C629



C630



C631



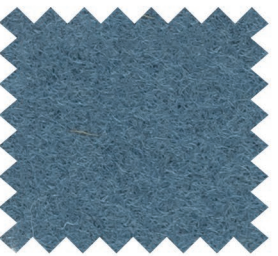
C632



C633



C637



C638



C639



C640



C641



C642



C645



C646



C647



C649



C653



C660



C665



C666



C669



C683



C685



E



EM00



EM01



EM02



EM03



EM04



EM05



EM06



EM07

Fantoni

Covering collection



EM08



EM09



EM10



EM11



EM12



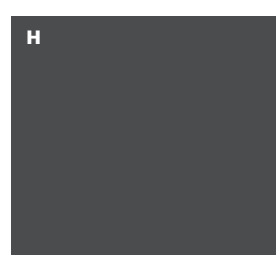
EM13



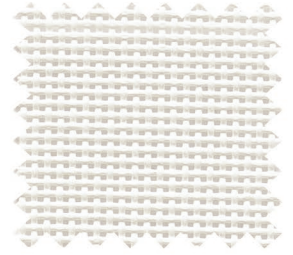
EM14



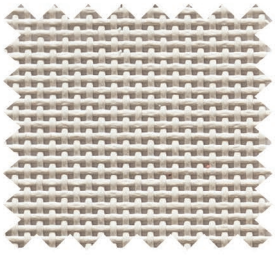
EM15



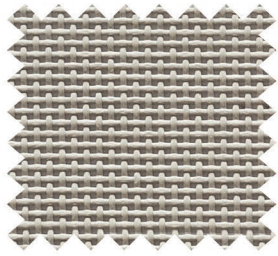
H



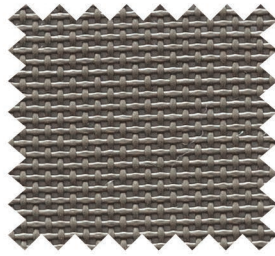
H001



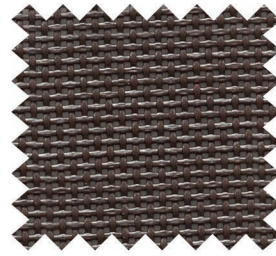
H003



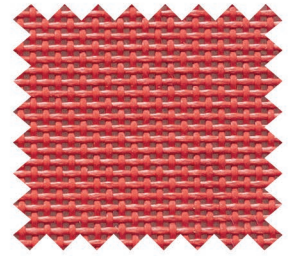
H006



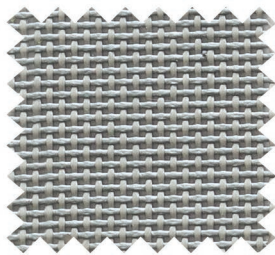
H007



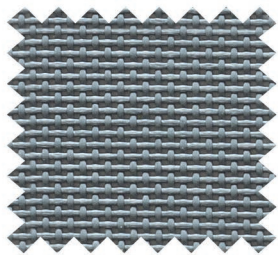
H008



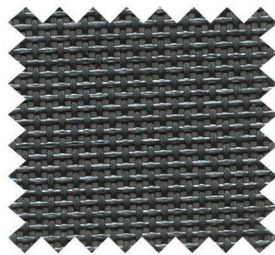
H014



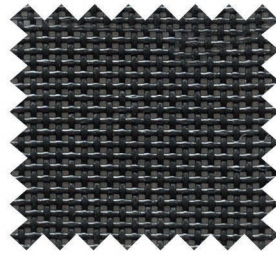
H018



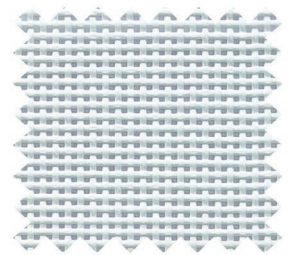
H019



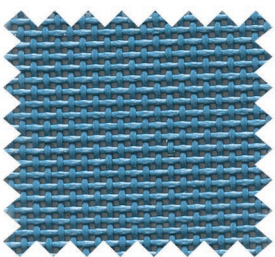
H020



H021



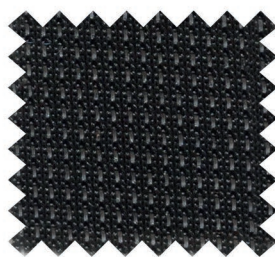
H024



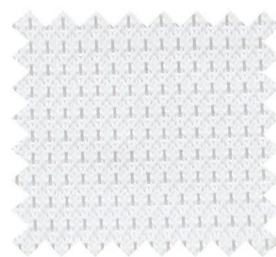
H025



HM



HM01



HM02



K



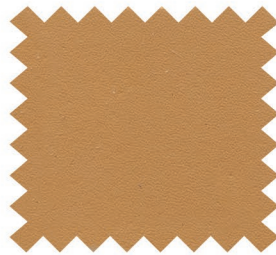
KC01



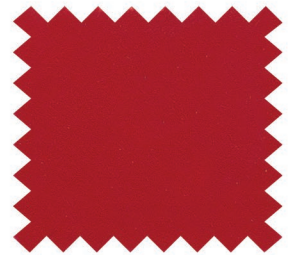
KC03



KC04



KC05



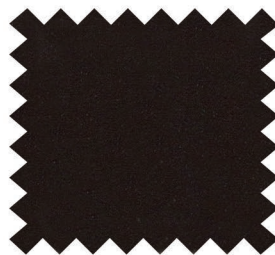
KC06



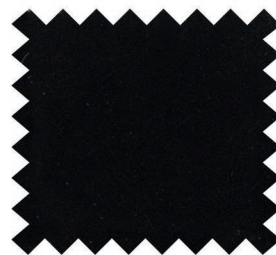
KC07



KC08



KC09



KC10



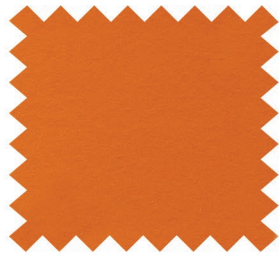
KC11

Fantoni

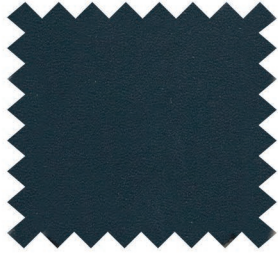
Covering collection



KC12



KC14



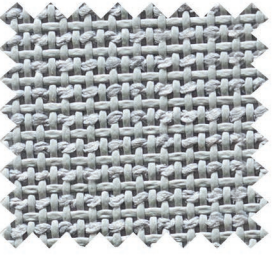
KC15



M



MBLK



MGRY



P



P600



P547



P432



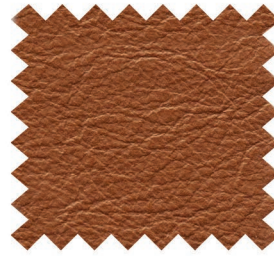
P392



P396



P677



P478



P324



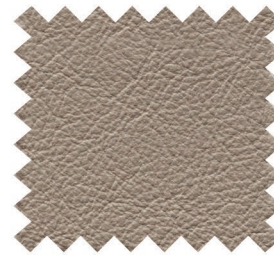
P364



P458



P394



P322



P210



P360



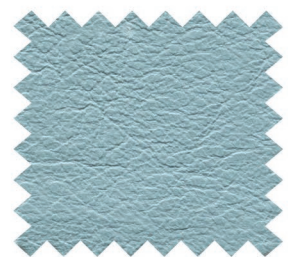
P500



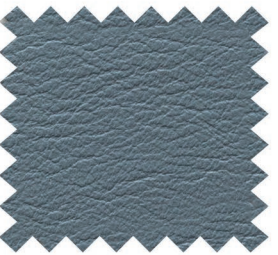
P208



P523



P527



P348



P443



P338



P602



P511



P700



P484

Tessuto 1 / Cat. 1 fabric	
Materiale / Material	100% Poliestere / Polyester
Peso / Weight	315 g/ml
Resistenza all'abrasione / Abrasion resistance	BS 5690/79 (Martindale) Cicli / Test cycles 40.000
Solidità colori alla luce / Colour fastness to fading	Xenotest 5
Reazione al fuoco / Flame resistance (*)	BS EN 1021 - 2

Tessuto A / Cat. A fabric	
Materiale / Material	Poliestere 100% Trevira CS / 100% Polyester Trevira CS
Peso / Weight	470 g/ml
Resistenza all'abrasione / Abrasion resistance	UNI EN ISO 12947/2 (Martindale) Cicli / Test cycles 100.000 ± 10%
Pilling	UNI EN ISO 12945/2 - Tolleranza da / Tolerance from 4 a/to 5
Solidità colori alla luce / Colour fastness to fading	Xenotest UNI EN ISO 105-B02 - Tolleranza da / Tolerance from 5 a/to 7
Solidità colori allo sfregamento / Colourfastness to rubbing	UNI EN ISO 105-X12 - Tolleranza da / Tolerance from 4 a/to 5
Reazione al fuoco / Flame resistance (*)	UNI 9175 Classe 1M / EN 1021 1&2 / California Bulletin CAL 117-E-Class 1 / IMO MSC 307(88) Annex 1 part 8 / MED Certificate IMO / DIN 4102 B1 / NFP 92-503/504/505 M1 / BS 5852 Part 1 0,1 Cigarette & match / BS 5852 Crib 5 / Class Uno UNI 9175 Class 1 I EMNE / ÖNORM B 3825-B1-3800-Q1 UK / FAR/JAR 25.853 (a) (i) (ii) / BS 7176 Medium Hazard / AM 18 - NF D 60-013 / CA TB 117-2013

Tessuto C / Cat. C fabric	
Materiale / Material	Lana vergine / Pure virgin wool 100%
Peso / Weight	800 g/ml
Resistenza all'abrasione / Abrasion resistance	UNI EN ISO 12947/2 (Martindale) Cicli / Test cycles 50.000
Pilling	UNI EN ISO 12945/2 - Scala / Scale 1-5 Tolleranza da / Tolerance from 4
Solidità colori alla luce / Colour fastness to fading	UNI EN ISO 105-B02 - Scala / Scale 1-8 Tolleranza da / Tolerance from 5 a/to 7
Solidità colori allo sfregamento / Colour fastness to rubbing	UNI EN ISO 105-X12 (umido / wet - secco / dry) - Scala / Scale 1-5 max 5 - Tolleranza da / Tolerance from 4 a/to 5
Reazione al fuoco / Flame resistance (*)	UNI 9175 Classe 1M / EN 1021 1&2 / California Bulletin CAL 117-E-Class 1 / BS 5852 Part 1 0,1 Sigaretta e fiammifero / Cigarette & match / ÖNORM B 3825-B1-3800-Q1 UK / IMO MSC 307(88) Annex 1 part 8 / MED Certificate IMO / ASTM E 84 / CA TB 117-2013

Ecopelle E / Cat. E eco-leather	
Materiale / Material	Superficie: 100% PU coagulato / coagulated PU / Media / average 47,5% pu / 21% pl 131,5% co
Spessore / Thickness	1,1 / 1,2 mm
Resistenza all'abrasione / Abrasion resistance	UNI EN ISO 12947-2/2000 (Martindale) Cicli / Test cycles 200.000
Solidità colori alla luce / Colour fastness to fading	UNI EN ISO 105-B02 - Scala blu / Blue scale - Chiari-Medi / Pale-Medium shade 5 / Scuri / Dark shades 4-5
Reazione ai fuoco / Flame resistance (*)	UNI 9175 - Classe 1 IM / EN 1021-1/2 : 1993 / California TB117:2000

Rete H / H Mesh	
Materiale / Material	Poliestere / Polyester 100%
Peso / Weight	500 g/m ²
Abrasione / Abrasion	UNI EN ISO 12947-2 (Martindale) Cicli / Cycles 120.000
Reazione al fuoco / Flame resistance	Classe M2 NFP 92-507 / B1 DIN 4102-1 / IMO A652 part 16 / EN 1021 part 1 e 2

Rete HM / HM Mesh	
Materiale / Material	Poliestere / Polyester 100%
Peso / Weight	385 g/m ²
Resistenza all'abrasione / Abrasion resistance	UNI EN ISO 12947/2 (Martindale) Cicli / Test cycles +100.000
Pilling test	5
Solidità colori alla luce / Colour fastness to fading	6
Solidità colori allo sfregamento / Colour fastness to rubbing	4/5
Reazione al fuoco / Flame resistance	UNI 9177 Classe 1 / Class 1

Rete M / M Mesh	
Materiale / Material	Filo di poliestere rivestito in PVC / PVC coated polyester thread
Peso / Weight	550 ± 5% g/m ²
Resistenza alla trazione / Tensile strength	Nel verso dell'ordito / Warp 220 Kg / 5 cm - Nel senso della trama / Weft 180 Kg / 5 cm
Allungamento / Stretch	Rottura dell'ordito / Break of warp 18% - Rottura della trama / Break of weft 14%
Reazione al fuoco / Flame resistance	Ignifugo / Flame retardant

Cuoio K / Cat. K Leather	
Materiale / Material	Pelle bovina / Bovine leather
Spessore / Thickness	1,9-2,1 mm
Solidità allo strofinio / Fastness to rubbing	IUF 450 Cicli / Cycles 1000
Solidità colori alla luce / Colour fastness to fading	IUF 401 Tolleranza da / Tolerance from 4 a/to 5
Reazione al fuoco / Flame resistance (*)	Classe / Class 1IM

Pelle P / Cat. P leather	
Materiale / Material	Pelle bovina pieno fiore / Full grain bovine leather
Spessore / Thickness	Ca. 0.9 mm
Solidità del colore allo strofinio / Colour fastness to rubbing	IUF 450 / UNI EN ISO 11640 - 500 battute a secco / dry cycles - ≥ 4 scala grigi / grey scale - 150 battute a umido / Wet cycles - ≥ 4 scala grigi / grey scale 80 battute al sudore / Sweat cycles ph 8 - ≥ 4 scala grigi / grey scale
Flessometro / Flexometer	IUP 20 - UNI EN ISO 5402 ≥ 30.000
Resistenza alla trazione / Tensile strength	IUP 40 - UNI EN ISO 3377-1 ≥ 20 N
Solidità colori alla Luce / Colour fastness to fading	IUF 402 / UNI EN ISO 105-B02 - 5 Scala dei blu / Blue scale
Adesione / Adhesion	IUP 470 / UNI EN ISO 11644 ≥ 3.50 N/cm
Reazione al fuoco / Flame resistance (*)	UNI EN ISO 1021-1/2 / BS 5852 1990 Sec.4 NI/0-1 / California T.B. 117

(*) Il grado di resistenza al fuoco dipende dal tipo di schiuma utilizzato / The degree of flame resistance depends on the type of foam used

Fantoni Spa

I-33010 Osoppo / Udine

t +39 0432 9761

f +39 0432 976266

info@fantoni.it

www.fantoni.it